

Fig. 21A

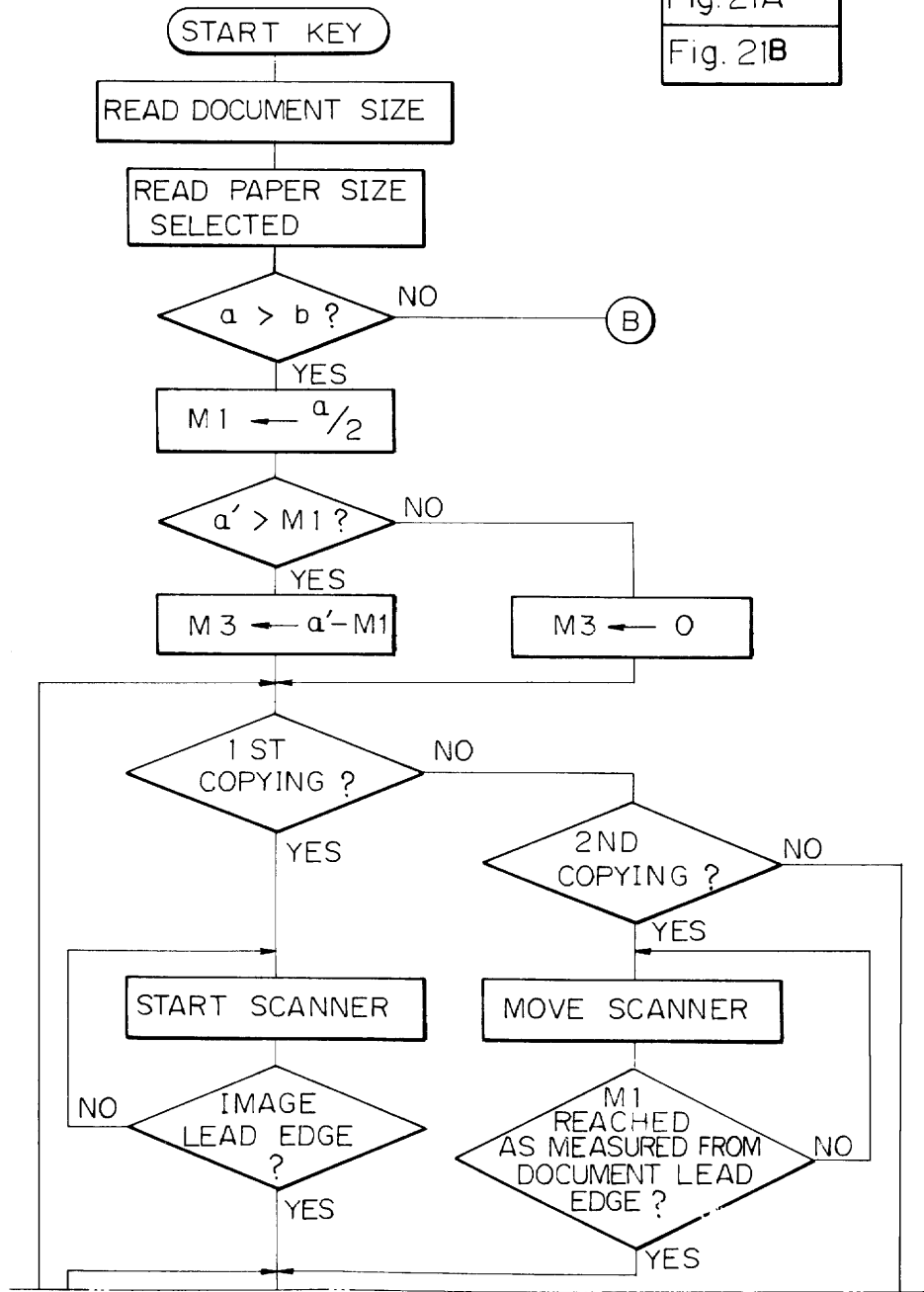
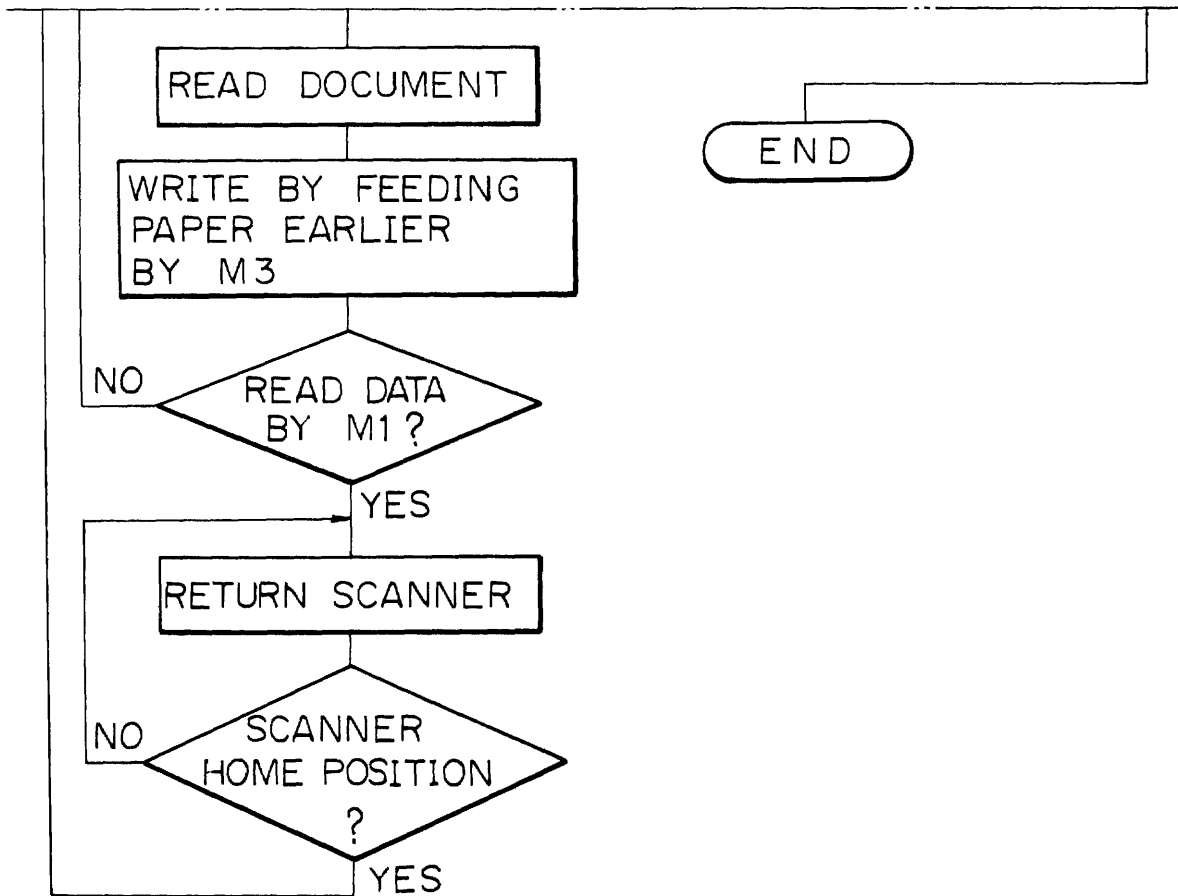


Fig. 21  
Fig. 21A  
Fig. 21B

Example 17 - Proper Paragraph (h)(2)(i). Partial views.

Fig. 21B



Example 17 (continued) - Proper Paragraph (h)(2)(i). Partial views.

---

# Guide for the Preparation of Patent Drawings

---



**U.S. DEPARTMENT OF COMMERCE**

**Ronald H. Brown  
Secretary**

**PATENT AND TRADEMARK OFFICE**

**Bruce A. Lehman  
Assistant Secretary of Commerce and  
Commissioner of Patents and Trademarks**

**October 1993**

contain center lines. Waveforms of electrical signals may be connected by dashed lines to show the relative timing of the waveforms.

(1) **Exploded views.** Exploded views, with the separated parts embraced by a bracket, to show the relationship or order of assembly of various parts are permissible. When an exploded view is shown in a figure which is on the same sheet as another figure, the exploded view should be placed in brackets.

**Each element on a view must be identified by a reference number, except on design drawings. See Examples in Appendix 4.**

(2) **Partial views.** When necessary, a view of a large machine or device in its entirety may be broken into partial views on a single sheet, or extended over several sheets if there is no loss in facility of understanding the view. Partial views drawn on separate sheets must always be capable of being linked edge to edge so that no partial view contains parts of another partial view. A smaller scale view should be included showing the whole formed by the partial views and indicating the positions of the parts shown. When a portion of a view is enlarged for magnification purposes, the view and the enlarged view must each be labeled as separate views.

(i) Where views on two or more sheets form, in effect, a single complete view, the views on the several sheets must be so arranged that the complete figure can be assembled without concealing any part of any of the views appearing on the various sheets.

(ii) A very long view may be divided into several parts placed one above the other on a single sheet. However, the relationship between the different parts must be clear and unambiguous.

(3) **Sectional views.** The plane upon which a sectional view is taken should be indicated on the view from which the section is cut by a broken line. The ends of the broken line should be designated by Arabic or Roman numerals corresponding to the view number of the sectional

## Example 17

Example 17, which extends over two pages, is a **proper** illustration of a partial view which may be submitted as a drawing. Note that each figure is labeled separately, and the end of the first figure can be placed at the beginning of the second figure to construct the complete drawing that depicts the entire device. The drawing meets the requirements of

### Paragraph (h)(2)(i) Partial views

Additionally, the drawing meets the requirements of

Paragraph (a)(1)	Black ink.
Paragraph (n)	Symbols.
Paragraph (o)	Legends.
Paragraph (p)(1)	Numbers, letters, and reference characters.
Paragraph (r)(1)	Arrows.
Paragraph (u)	Numbering of views.